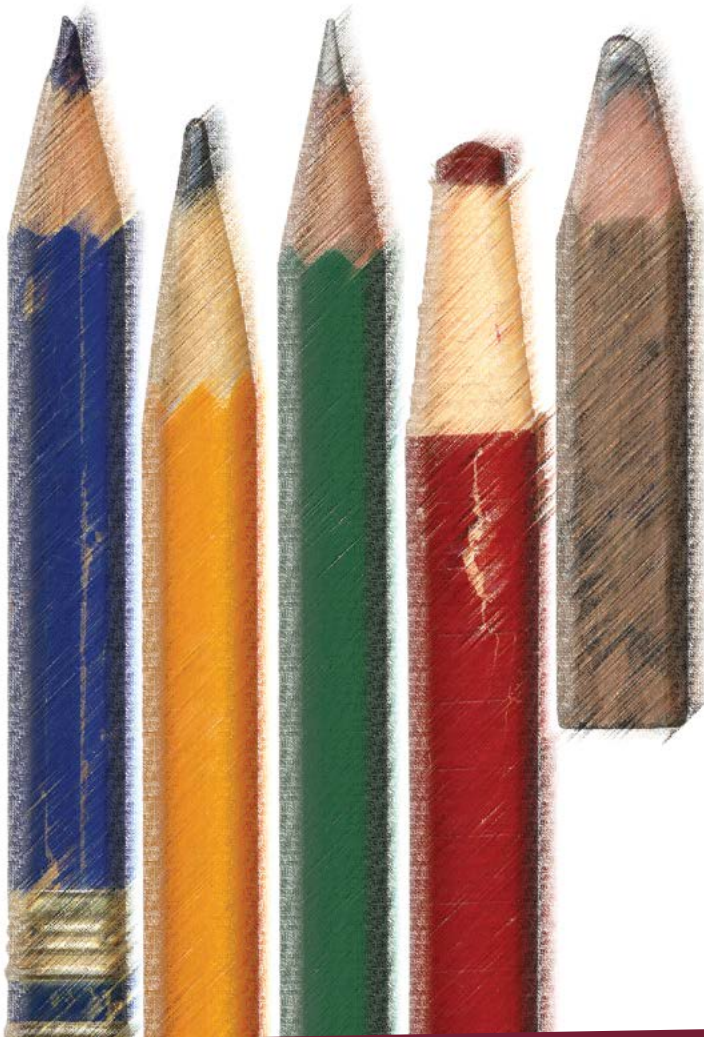


How and where can I vote in a Provincial Election?

Nova Scotia's *Elections Act* provides you with a dozen ways to vote.



1 • Election Day (8:00 am - 8:00 pm)

- Find your polling location on the Voter Information Card you received in the mail, OR
- Look online at www.electionsnovascotia.ca and enter your address under Where Do I Vote? OR
- Phone Elections Nova Scotia at 1-800-565-1504

How do I make sure my polling location is wheelchair accessible?

Look for the symbol on the Voter Information Card you receive in the mail or call your returning officer at least one week before election day.

If your polling location is not accessible, your returning office will have a plan to accommodate you at another polling location that you can access within your electoral district or offer to send a write-in ballot team to your house.

Elections Nova Scotia makes every effort practical to ensure all polling locations have level access and accommodate wheelchairs.

2 • Advance Poll

Elections Nova Scotia offers seven days of advance polls starting on the second Saturday before the election (closed Sunday). You can vote at any advance poll in the province.

Saturdays, Monday – Wednesday 9 am to 6 pm
Thursday – Friday 9 am to 8 pm

How do I find the nearest advance polling location?

Check the Voter Information Card you received in the mail OR
Go online: www.electionsnovascotia.ca OR
Phone Elections Nova Scotia at 1-800-565-1504

3 • Home

There are two ways to vote at your home:

- Make an appointment through your local returning office for a write-in ballot team to visit you at home and help you vote, OR
- Ask someone who is at least 16 years old, such as a neighbour, family member, caregiver, or friend, to help you apply for a write-in ballot. This person is called an agent and will bring your ballot kit home to you.

Example

Ahmed is recovering from a hip replacement. Because he knows he won't be able to travel to the polling location on election day, he called Elections Nova Scotia for an application for a write-in ballot. Ahmed was able to vote from home one week before election day.

4 • Your Returning Office

You can vote at your local returning office or at any returning office in the province. The poll is open from 9:00 am to 6:00 pm every day except Sundays, and up to 8:00 pm on election day.

5 • At any Returning Office in Nova Scotia

You can vote at any returning office in the province, not just your local returning office. The poll hours would match those above with one exception – you will only be able to vote out of your electoral district until 6:00 pm on the Saturday before election day.

6 • Residential Centre

If you live in a residential centre with 10 or more resident electors, your local returning officer must establish a mobile poll there for two hours or more on election day. A residential centre with 10 or more resident electors can be a nursing home, special care home, assisted living facility, residential unit in a public hospital or any other residential facility operated for the purpose of the care and treatment of senior citizens or persons having a physical or mental disability.

If you live in a residential centre with fewer than 10 resident electors, your local returning officer will work with your facility administrator to have a write-in ballot team visit the facility before election day so all eligible electors may vote.

Contact Elections Nova Scotia or your local returning office to make sure your residential centre is on their list.

7 • Shelter

If you are staying at a shelter because you are currently homeless, you can register to vote using the address of this shelter as your residence. A shelter can mean a hostel or other place that provides food, lodging, or other social services. You will be asked for identification to register to vote. A letter provided by the administrator of the shelter will attest to your residency. If you do not have identification, you will be asked to make a declaration.

If you are staying in a shelter for your own protection, you can apply for a write-in ballot and vote before election day. Use the shelter's address as your place of residence in your application. Or, a write-in ballot team can visit your shelter. Your name and location will be kept confidential.

Contact Elections Nova Scotia or your local returning office for more information.

8 • Outside of Nova Scotia

If you are a Nova Scotia elector living temporarily outside Nova Scotia, you can apply for a write-in ballot and vote before election day. Contact Elections Nova Scotia for more information.

9 • University or Community College

If you are a post-secondary student from Nova Scotia, you must vote in the electoral district that you consider your residence: either the place where you live while at university or college or the place in Nova Scotia where you lived prior to going to university and intend to return at the end of the school year.

You may choose one or the other as your residence when you register to vote but not both. You can vote in one of seven ways:

- on election day at your polling location
- at an advance poll
- at the campus poll if one is held at your university or college campus
- at your returning office
- by appointment with a write-in ballot team
- at the out-of-district poll at any returning office
- by mailing in a write-in ballot

Example

Eileen, an eighteen year old, is a first-year student from Ottawa. A Nova Scotia election is called in the fall for the electoral district where she lives in Antigonish while attending university. She is not an elector as she does not yet meet the six-month provincial residency rule.

William is from Digby but he lives in Halifax while attending university. He is an elector and may choose to register and to vote in either the electoral district in which he lives in Halifax or in Digby.

10 • Hospital

If you are in hospital during a Nova Scotia election and will be unable to vote on election day or to get to any of the other early voting opportunities, you may apply to vote by write-in ballot. Write-in ballot teams will visit hospitals on set days during the week before election day. The dates and times will be posted in the hospital and advertised. Check with hospital administrators for more details.

11 • Military Post Outside of Nova Scotia

If you are a Nova Scotia elector away on duty aboard ship, at a Canadian Armed Forces base in Canada, or serving out of country when a provincial election is called, you may apply to vote by write-in ballot. Your mailing address is the address of the ship or base to which you are posted. If you have lived in Nova Scotia at least six months and intend to return at the end of your duty, your residence is your most recent address in Nova Scotia.

If you are an immediate family member of a serving member of the Canadian Armed Forces serving out of the country, you can also apply to vote by write-in ballot.

12 • Correctional Facility

If you are a Nova Scotia elector resident at a correctional facility, you may vote by write-in ballot. You can get a write-in ballot application form from a liaison officer at your provincial or federal correctional facility.

Your write-in ballot will be approved after verifying your Nova Scotia residency prior to incarceration and Elections Nova Scotia will issue you a write-in ballot kit and it will be delivered to you through the correctional facility liaison officer in the correctional centre where you are serving your sentence. After you have voted, the write-in ballot will be returned to be counted at the close of polls on election day.

It's a fact: During an election, voting takes place on every day of the week except Sundays.

Q&A

Who can vote?

You can vote in an election if...

- You are 18 years of age or older on election day,
- You are a Canadian citizen, and
- You lived in Nova Scotia for six months or more before the day the election is called

How do I find my returning office?

Check the Voter Information Card you received in the mail, call Elections Nova Scotia or check the Electoral District Finder at www.electionsnovascotia.ca.

How do I apply to vote by write-in ballot?

Step 1: Fill in a write-in ballot application. Applications are available in person or by an agent at a returning office, online or by mail from Elections Nova Scotia. An agent is a person who helps another person apply for and return a write-in ballot, such as a neighbour, family member,

caregiver, or friend. Requests for write-in ballots must be received before:

- the start of advance polls, if you or your agent are applying at a returning office other than the returning office in your electoral district
- the close of advance polls, if you or your agent are applying at the returning office in your electoral district
- the tenth day prior to election day, if your write-in ballot application was obtained in any other way

Step 2: If your application is approved, your returning officer will send you a write-in ballot kit.

Step 3: Vote by writing the name of the candidate or marking the registered party you are voting for on your write-in ballot. Completed ballots must be received at the local returning office by close of polls (8:00 pm) on election day.

What is an advance poll?

An advance poll is a polling location that is open from Saturday to Saturday (excluding Sunday) before election day. You may vote at any advance poll in the province.

What is a returning office poll?

A returning office poll is a voting opportunity at a returning office that is open every day except Sunday during regular office hours (9 am to 6 pm). You may vote at any returning office.

What is a mobile poll?

A mobile poll is a voting opportunity on election day for the residents of a nursing home, special care or assisted living home.

What is the difference between an elector and a voter?


An elector is a person eligible to vote. A voter is an elector who has voted.


Look for your returning office information in your local newspaper, on the Voter Information Card you received in the mail or at the Election Nova Scotia website after an election has been called. See the Electoral District Finder for more information.



902-424-8584 (HRM)

1-800-565-1504 (Toll free in Nova Scotia)

902-424-7475 (TTY) 

1-866-774-7074 (Toll Free) 

902-424-6622 (Fax)

elections@gov.ns.ca

or visit www.electionsnovascotia.ca