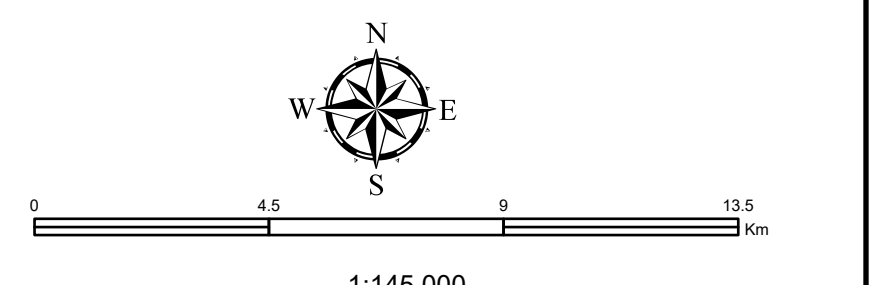


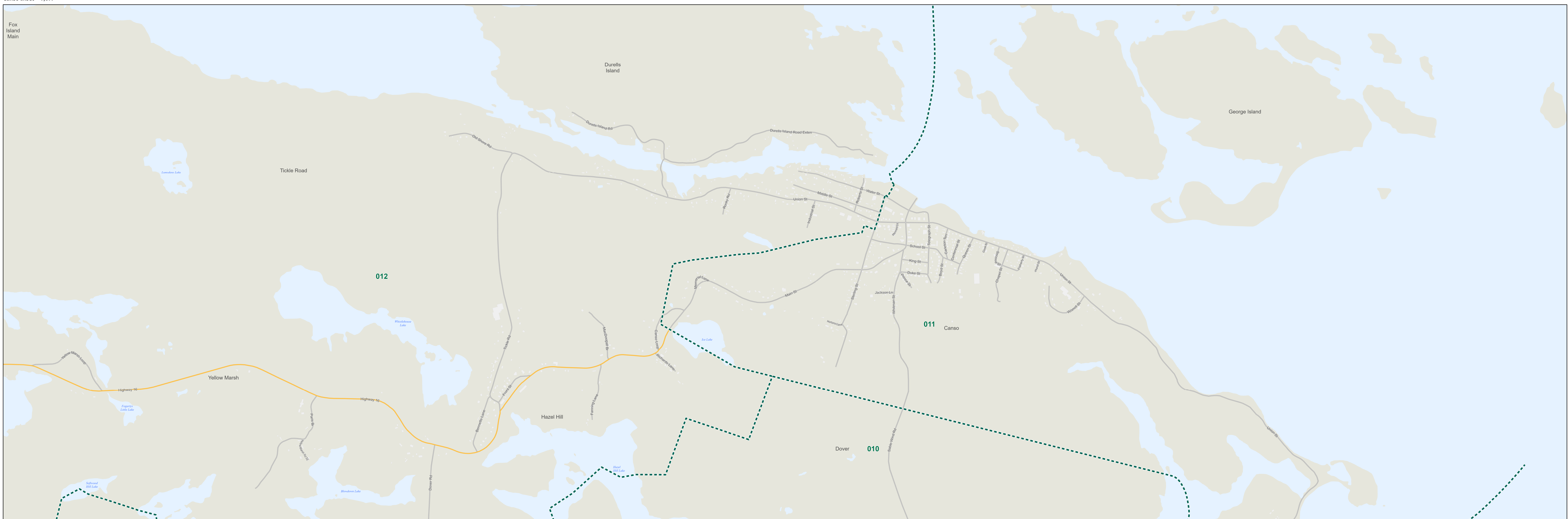
- Legend**
- - - - - 2019 Electoral District Boundary
  - - - - - Polling Division Boundary
  - Electoral District
  - ▲ Residential Centre Polling Division
  - 001 Polling Division Number
  - Highway - 100 Series / Trans Canada
  - Secondary Highway
  - Road
  - + — + Railroad
  - Airport
  - Lake / Ocean
  - Building Footprint

**Provincial Electoral Map Series - 2026**  
The electoral district names and boundaries are based on amendments to the House of Assembly Act as passed through Bill No. 203, House of Assembly Act (amended), Chapter 32 of the Acts of 2026; An Act to Amend Chapter 1 (1992 Supplement) of the Revised Statutes, 1991, the House of Assembly Act.  
 NAD83 (CSRS) / UTM Zone 20N  
 Base Mapping Source: Service Nova Scotia, Department of Natural Resources  
 Produced by: Elections Nova Scotia  
 Version Date: March 12, 2026

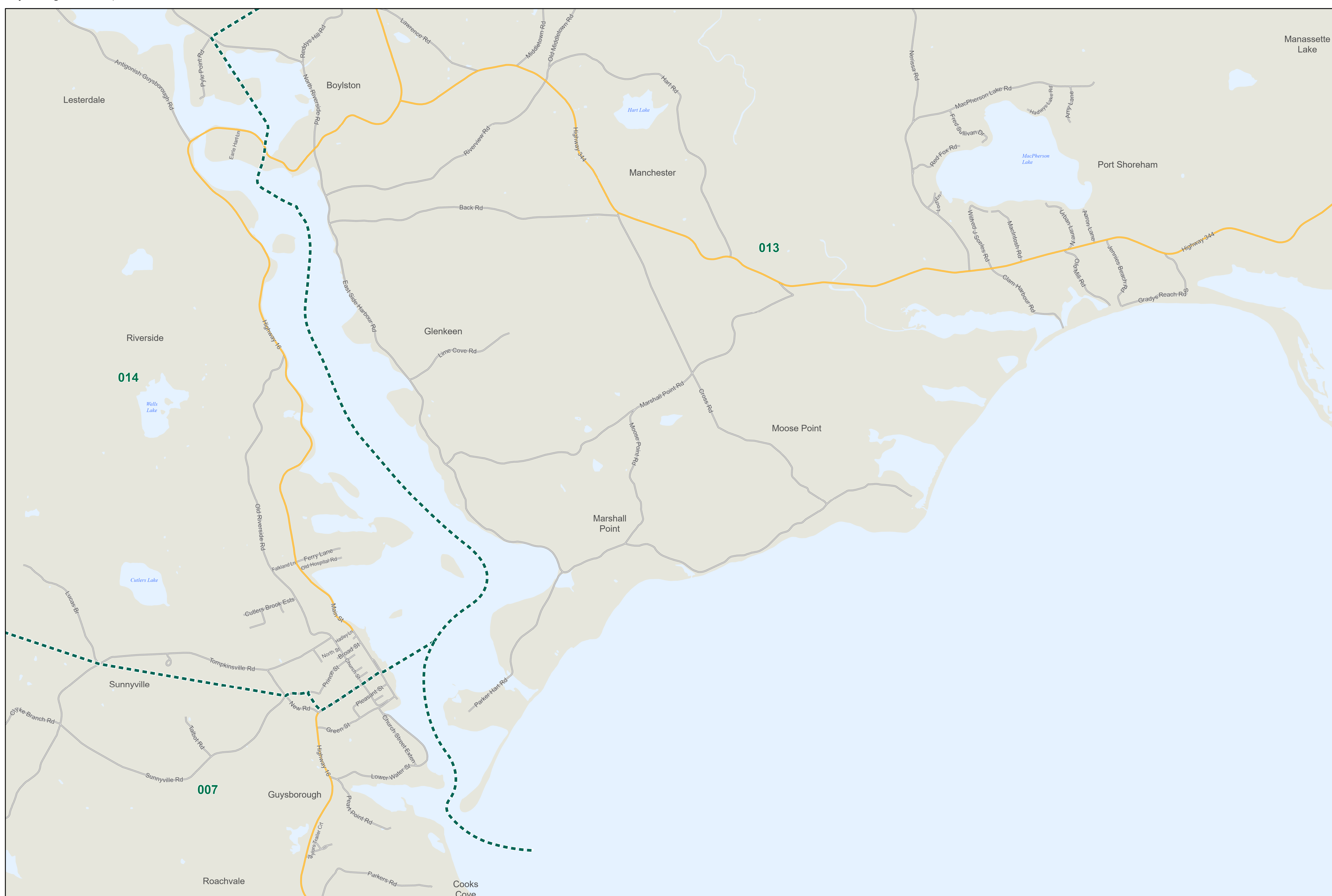


# Electoral District of Guysborough-Tracadie Inset Map

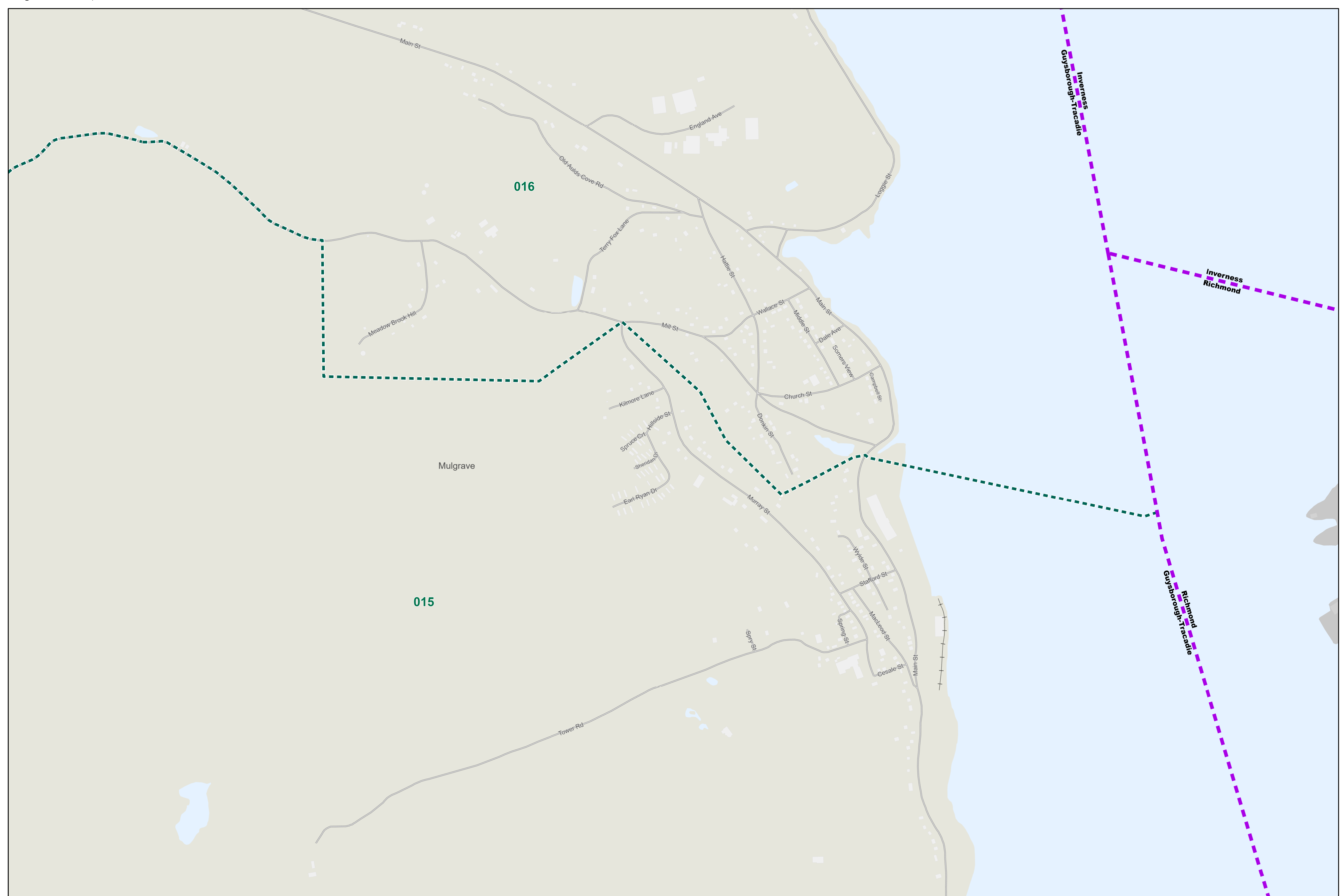
Canso Inset - 9,100



Guysborough Inset - 23,770



Mulgrave Inset - 7,310



- Legend**
- 2019 Electoral District Boundary
  - Polling Division Boundary
  - Electoral District
  - ▲ Residential Centre Polling Division
  - 001 Polling Division Number
  - Highway - 100 Series / Trans Canada
  - Secondary Highway
  - Road
  - Railroad
  - Airport
  - Lake / Ocean
  - Building Footprint

