

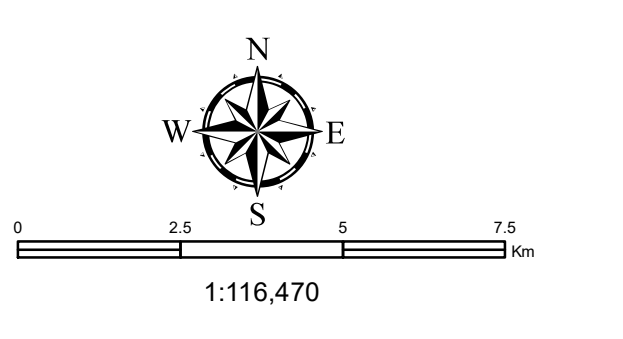
Legend

2019 Electoral District Boundary	Highway - 100 Series / Trans Canada	Lake / Ocean
Polling Division Boundary	Secondary Highway	Building Footprint
Electoral District	Road	Railroad
Residential Centre Polling Division	Airport	
001 Polling Division Number		

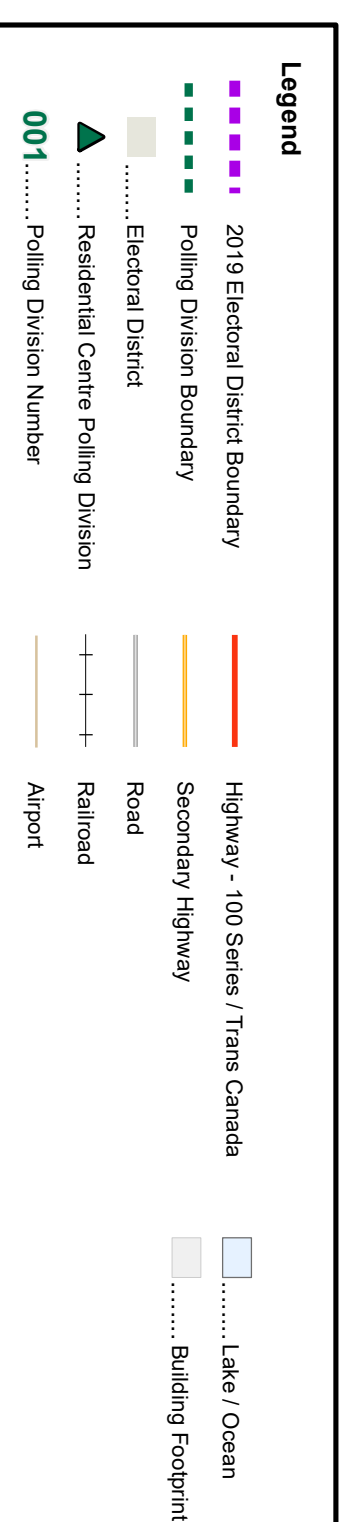
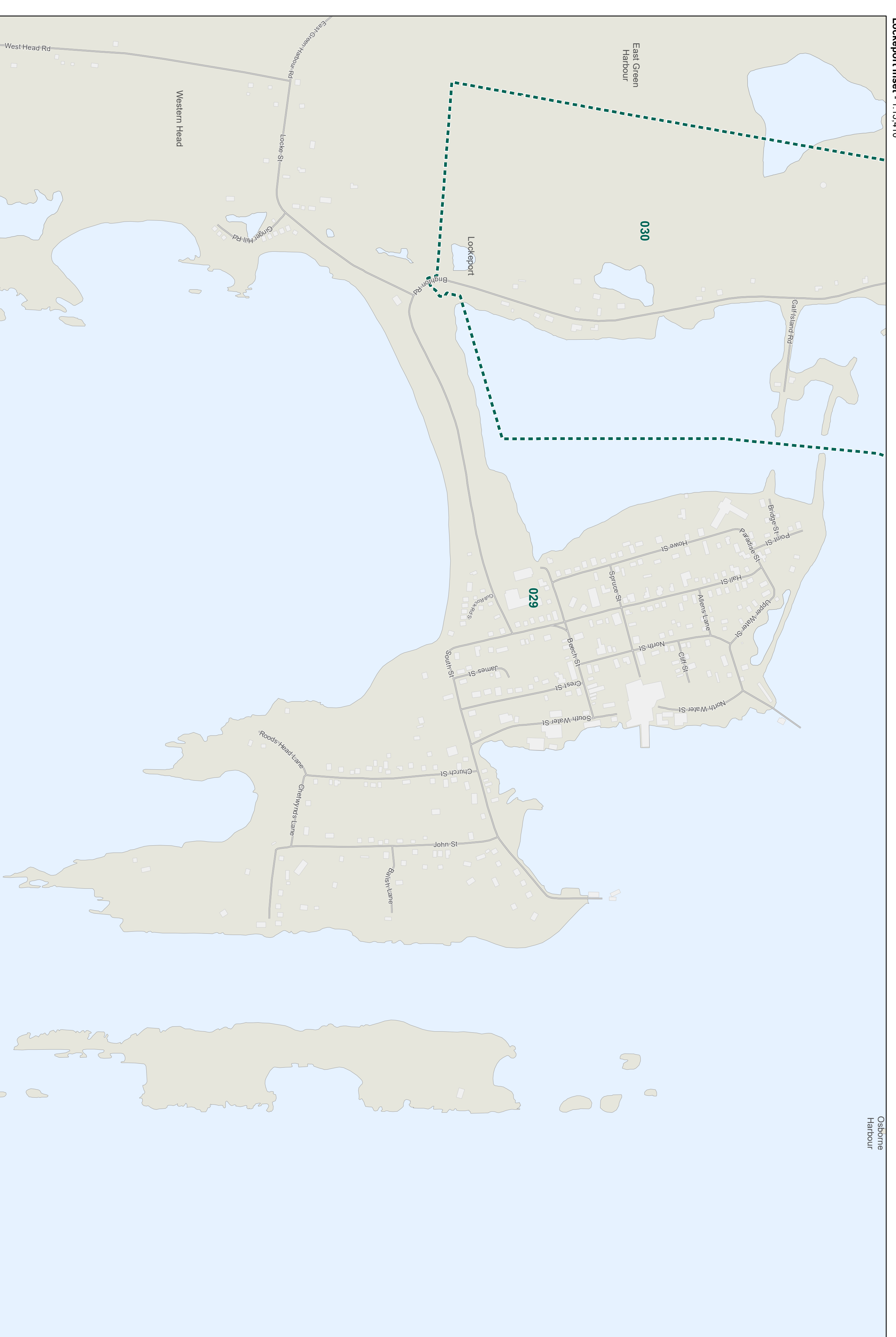
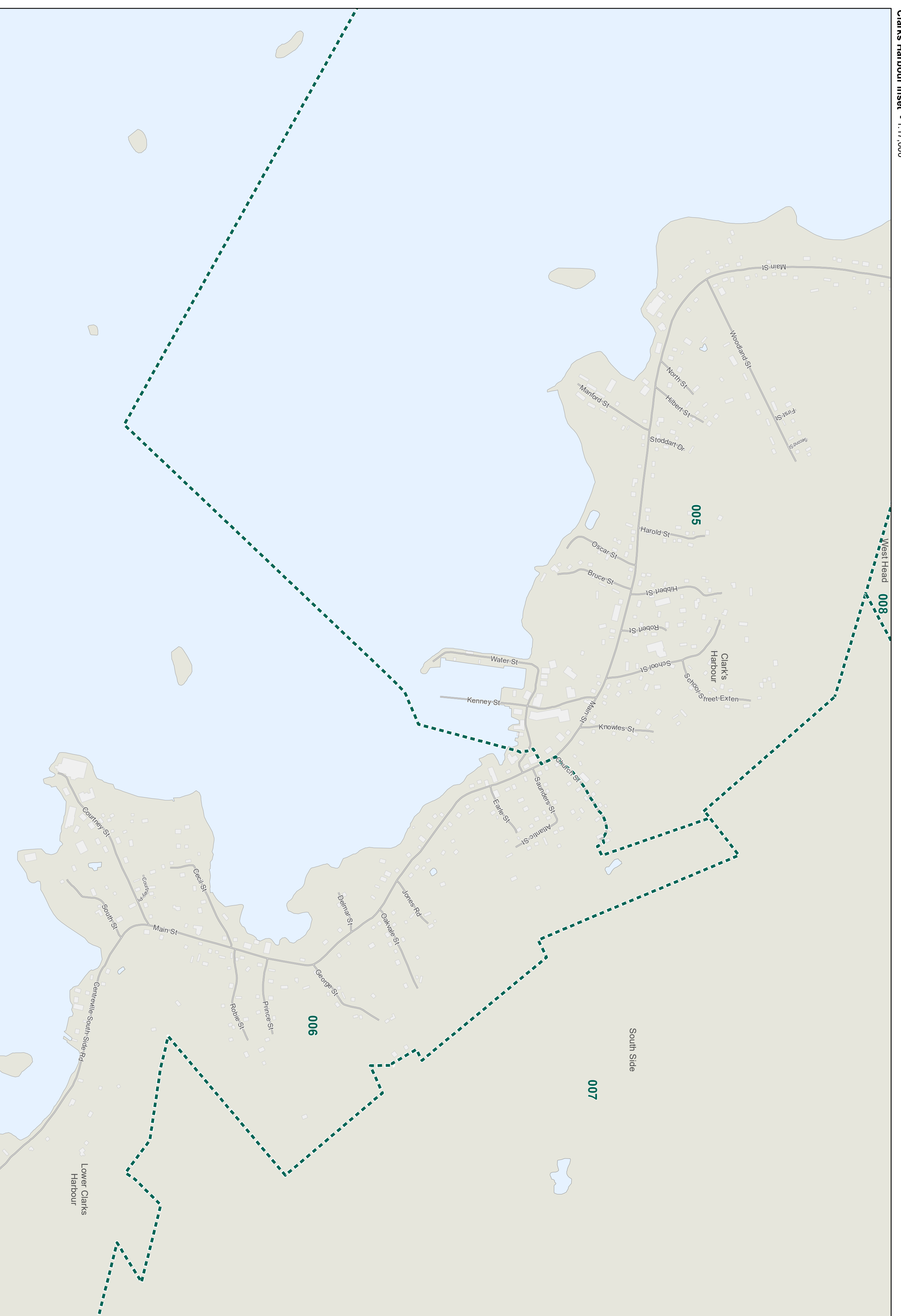
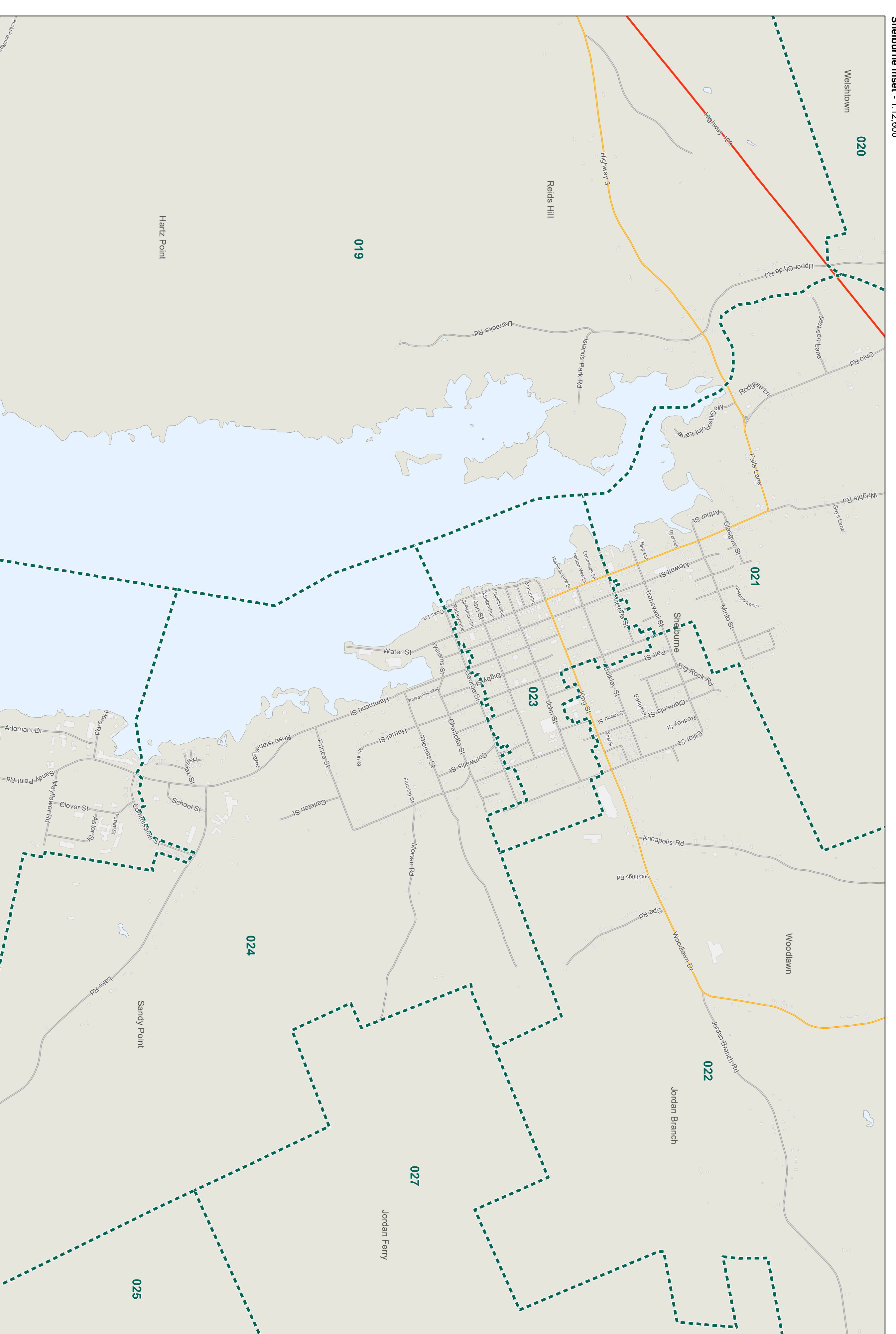
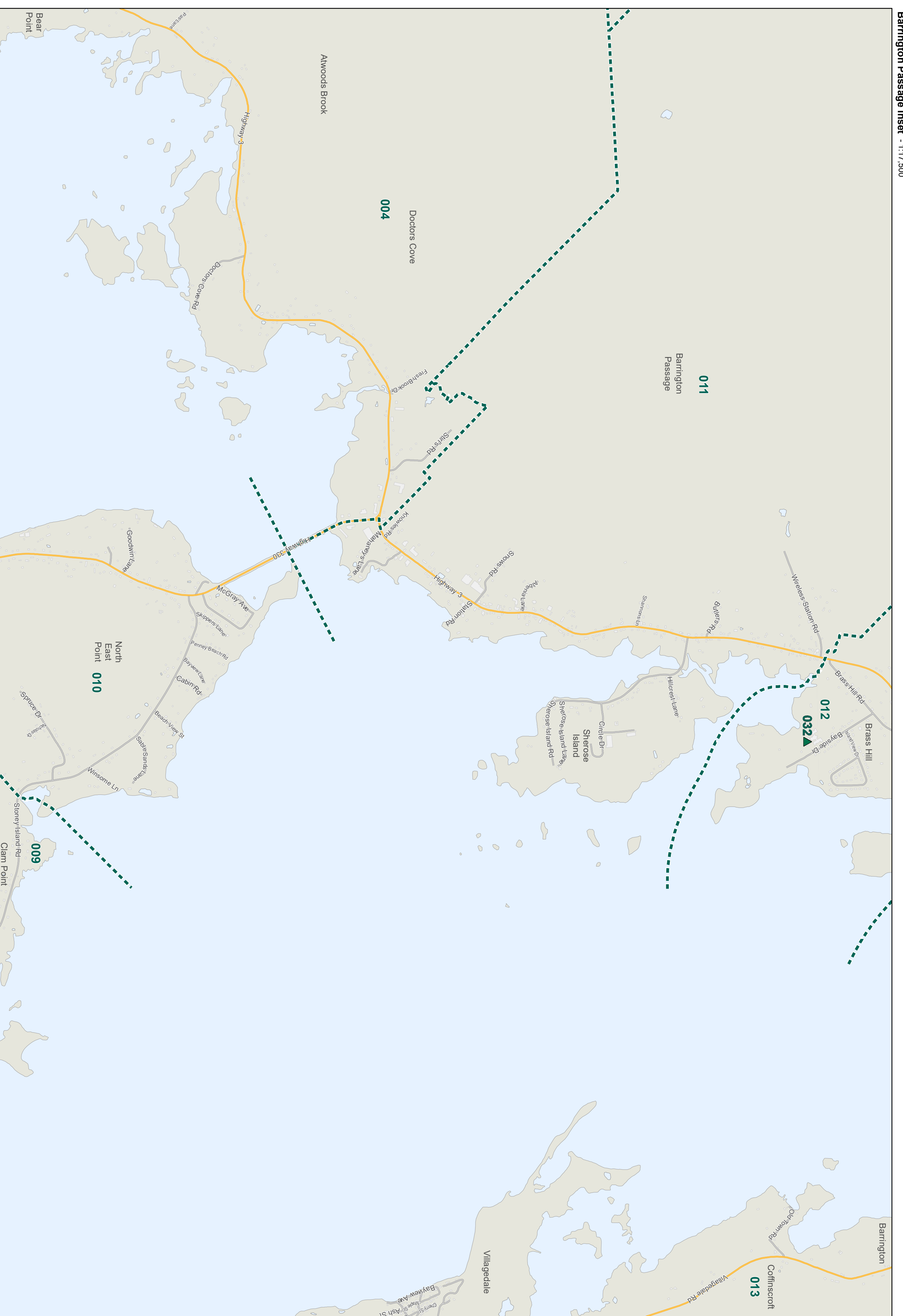
Provincial Electoral Map Series - 2019

The electoral district names and boundaries are based on amendments to the House of Assembly Act as passed through Bill No. 197, House of Assembly Act (amended), Chapter 32 of the Acts of 2019: An Act to Amend Chapter 1 (1992 Supplement) of the Revised Statutes, 1989, the House of Assembly Act.

NADES (CSRS) / UTM Zone 20N
Base Mapping Source: Service Nova Scotia, Department of Natural Resources
Produced by: Elections Nova Scotia
Version Date: January 1, 2019



49 - Electoral District of Shelburne
Inset Map



Provincial Electoral Map Series - 2019

The electoral district names and boundaries are based on amendments to the House of Assembly Act as passed through Bill No. 87 House of Assembly Act (amended) Chapter 22 of the Acts of 2019 and Act by Amend Chapter 1 (2020) (amendment of the Electoral Districts, 1986) the House of Assembly Act.

Base Mapping Source: Service Nova Scotia / Government of Nova Scotia

Prepared by: Elections Nova Scotia

Version Date: January 1, 2021

