

Legend

- - - - - 2019 Electoral District Boundary
- - - - - Polling Division Boundary
- - - - - Electoral District
- ▲ Residential Centre Polling Division
- 001 Polling Division Number
- Highway - 100 Series / Trans Canada
- Secondary Highway
- Road
- + — + — Railroad
- Airport
- Lake / Ocean
- Building Footprint

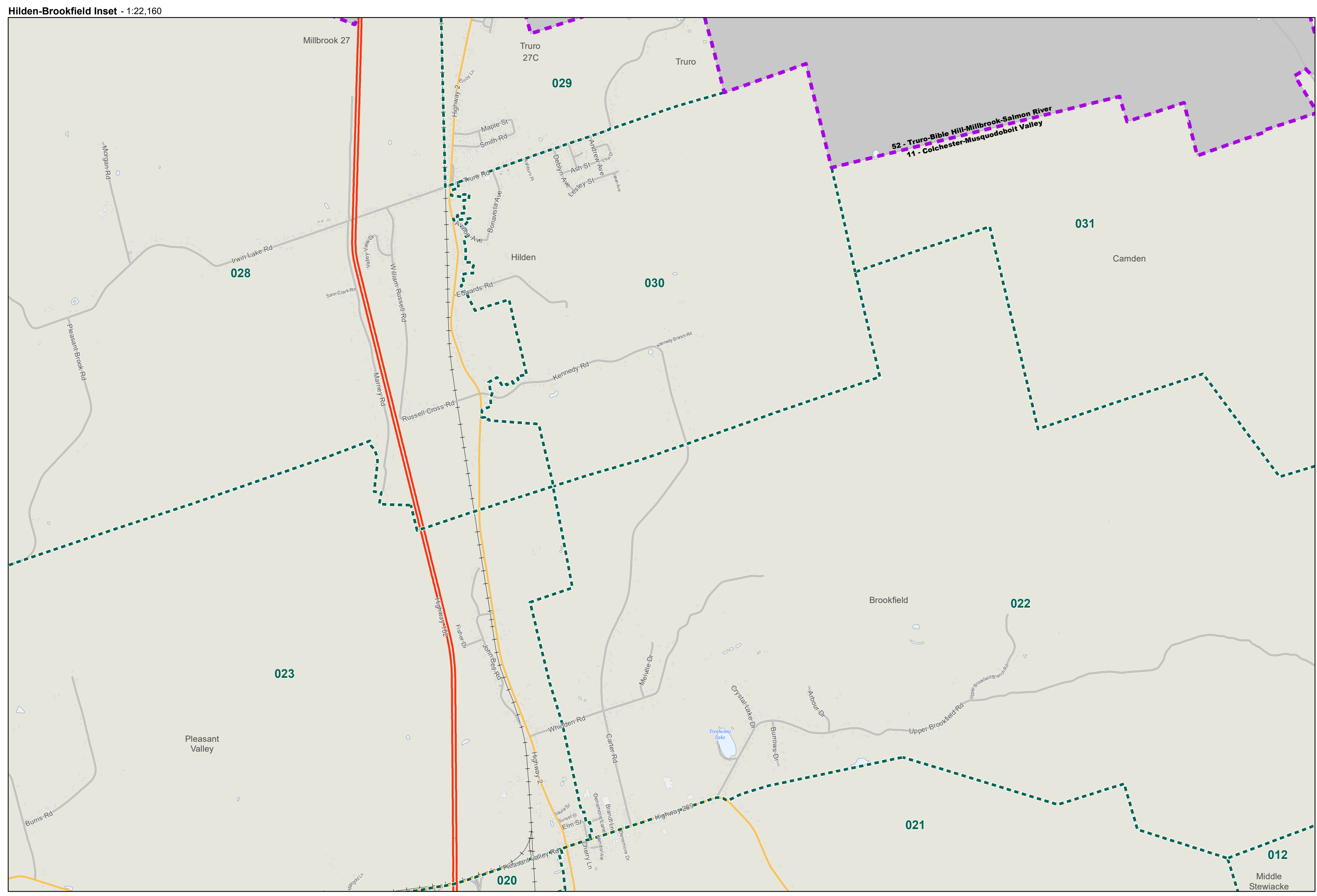
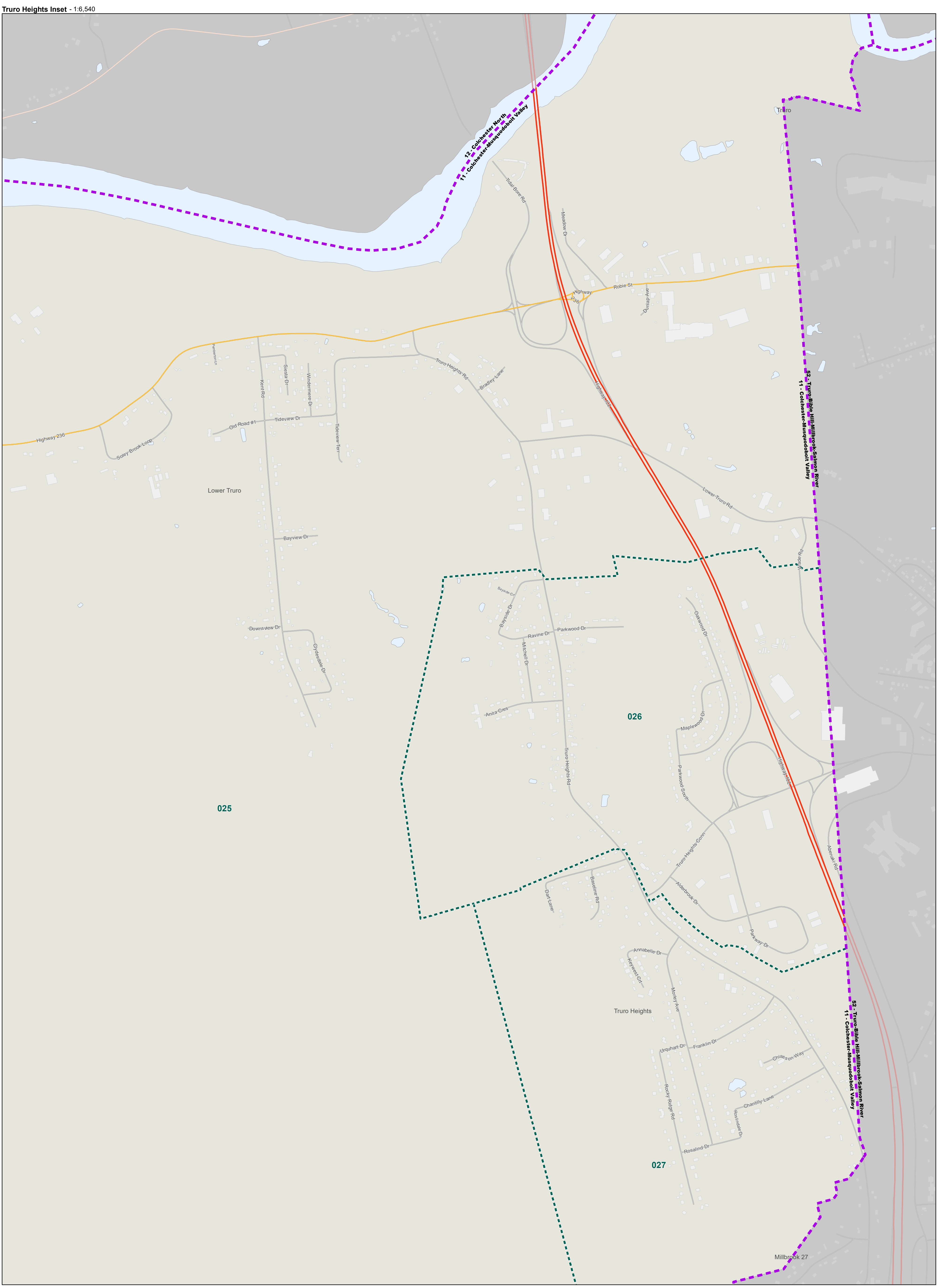
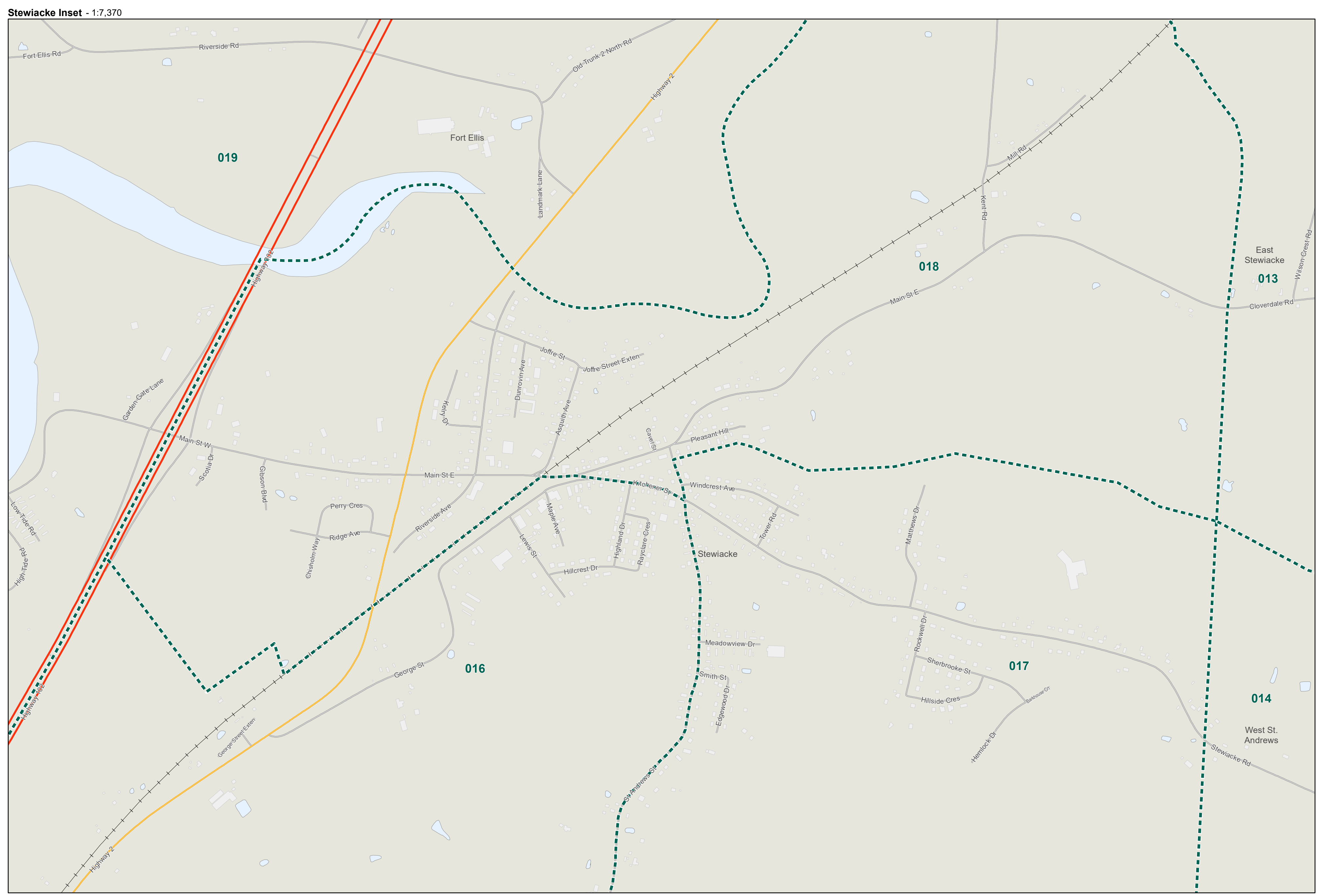
Provincial Electoral Map Series - 2019

The electoral district names and boundaries are based on amendments to the House of Assembly Act as passed through Bill No. 187, House of Assembly Act (enacted), Chapter 22 of the Acts of 2015, An Act to Amend Chapter 1 (1992 Supplement of the Revised Statutes, 1991, the House of Assembly Act.

NAD83 (CRSR) / UTM Zone 20N
Base Mapping Source: Service Nova Scotia, Department of Natural Resources
Produced by: Elections Nova Scotia
Version Date: January 1, 2021

1:97,600

11 - Electoral District of Colchester-Musquodoboit Valley Inset Map



- Legend**
- 2019 Electoral District Boundary
 - Polling Division Boundary
 - Electoral District
 - ▲ Residential Centre Polling Division
 - 001 Polling Division Number
 - Highway - 100 Series / Trans Canada
 - Secondary Highway
 - Road
 - Railroad
 - Airport
 - Lake / Ocean
 - Building Footprint

Provincial Electoral Map Series - 2019

The electoral district names and boundaries are based on amendments to the House of Assembly Act as passed through Bill No. 187, House of Assembly Act (amended), Chapter 32 of the Acts of 2019. An Act to Amend Chapter 1 (1992 Supplement) of the Revised Statutes, 1989, the House of Assembly Act.

NAD83 (CSRS) UTM Zone 20N
Base Mapping Source: Service Nova Scotia, Department of Natural Resources

Produced by: Elections Nova Scotia
Version Date: January 1, 2021

