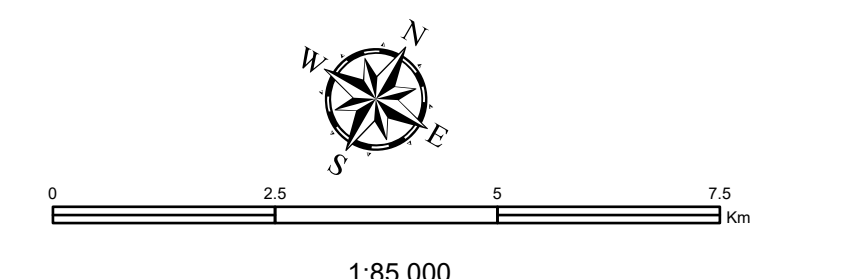


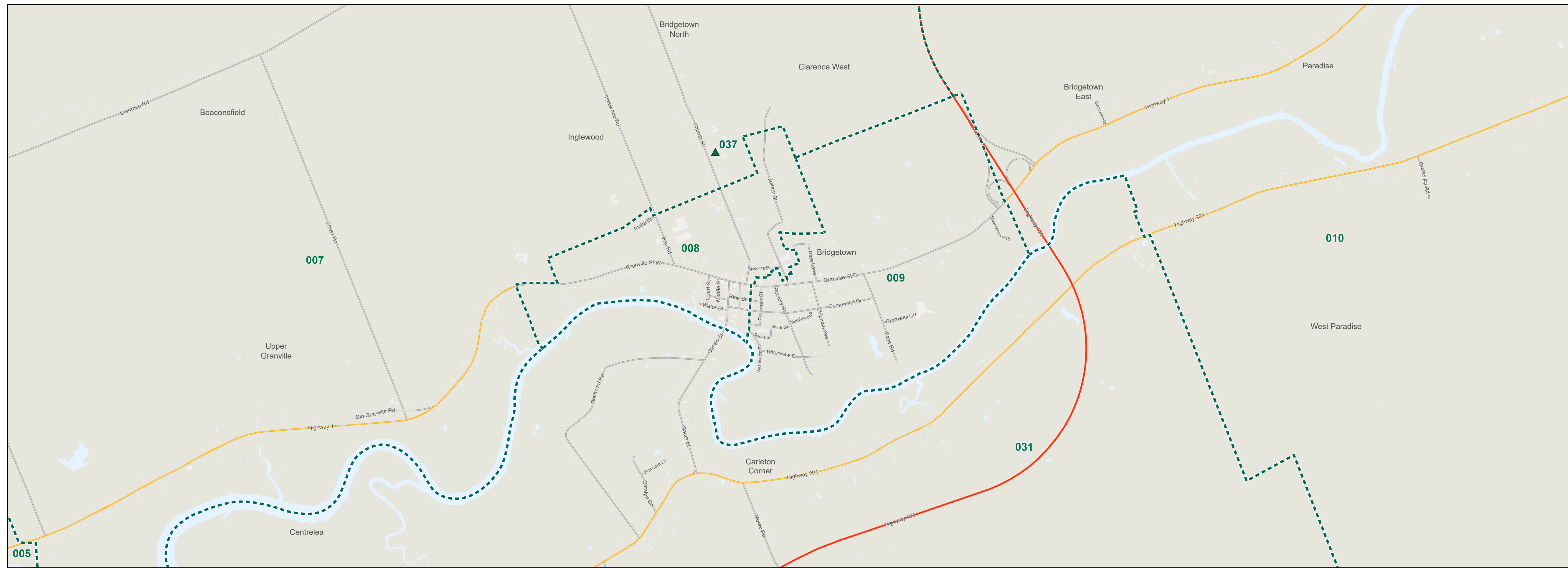
- Legend**
- - - 2019 Electoral District Boundary
 - - - Polling Division Boundary
 - Electoral District
 - ▲ Residential Centre Polling Division
 - 001 Polling Division Number
 - Highway - 100 Series / Trans Canada
 - Secondary Highway
 - Road
 - + — Railroad
 - Airport
 - Lake / Ocean
 - Building Footprint

Provincial Electoral Map Series - 2026
 The electoral district names and boundaries are based on amendments to the House of Assembly Act as passed through Bill No. 203, House of Assembly Act (amended), Chapter 32 of the Acts of 2026. An Act to Amend Chapter 1 (1992 Supplement) of the Revised Statutes, 1991, the House of Assembly Act.
 NAD83 (CSRS) / UTM Zone 20N
 Base Mapping Source: Service Nova Scotia, Department of Natural Resources
 Produced by: Elections Nova Scotia
 Version Date: March 12, 2026

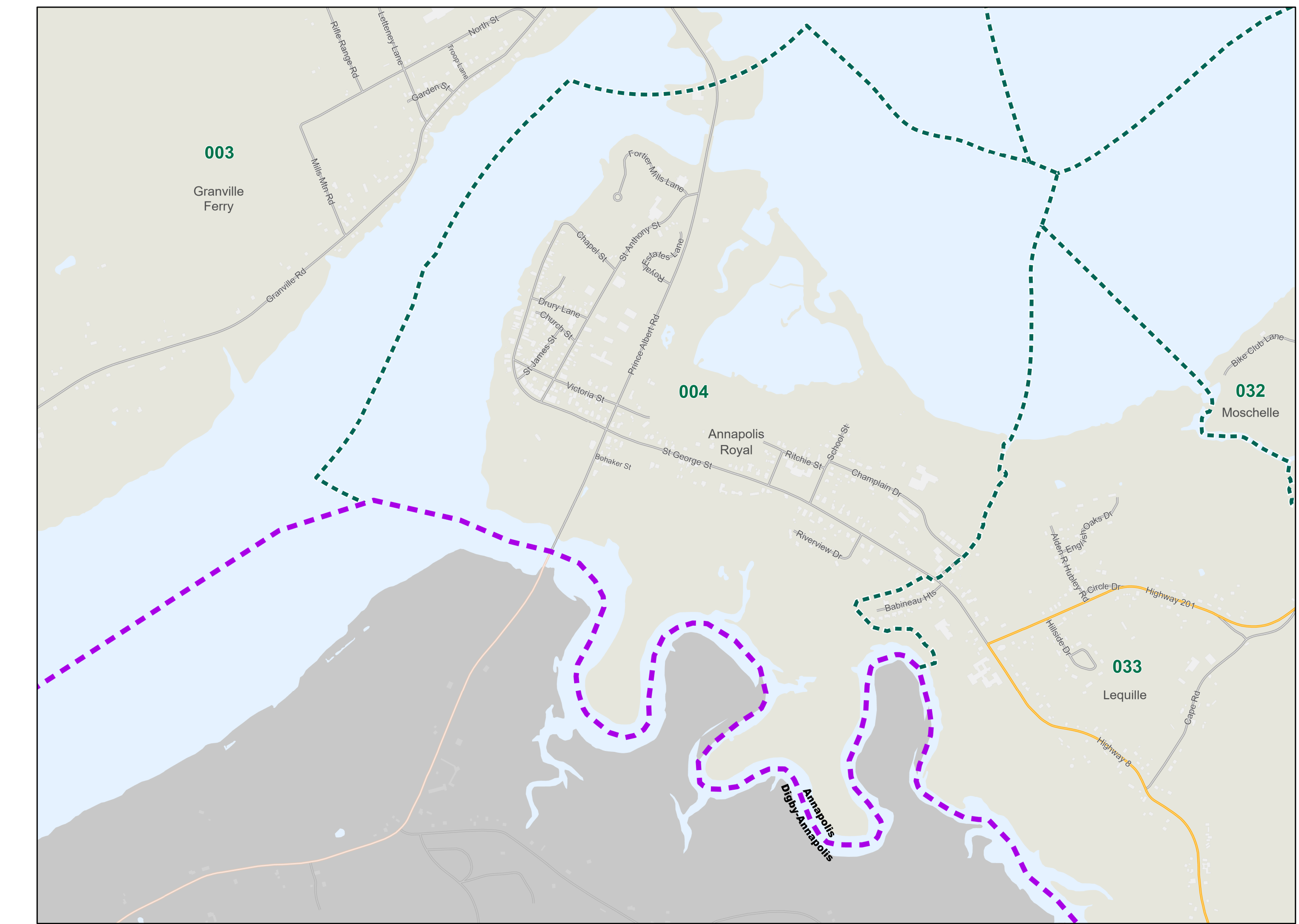


Electoral District of Annapolis Inset Map

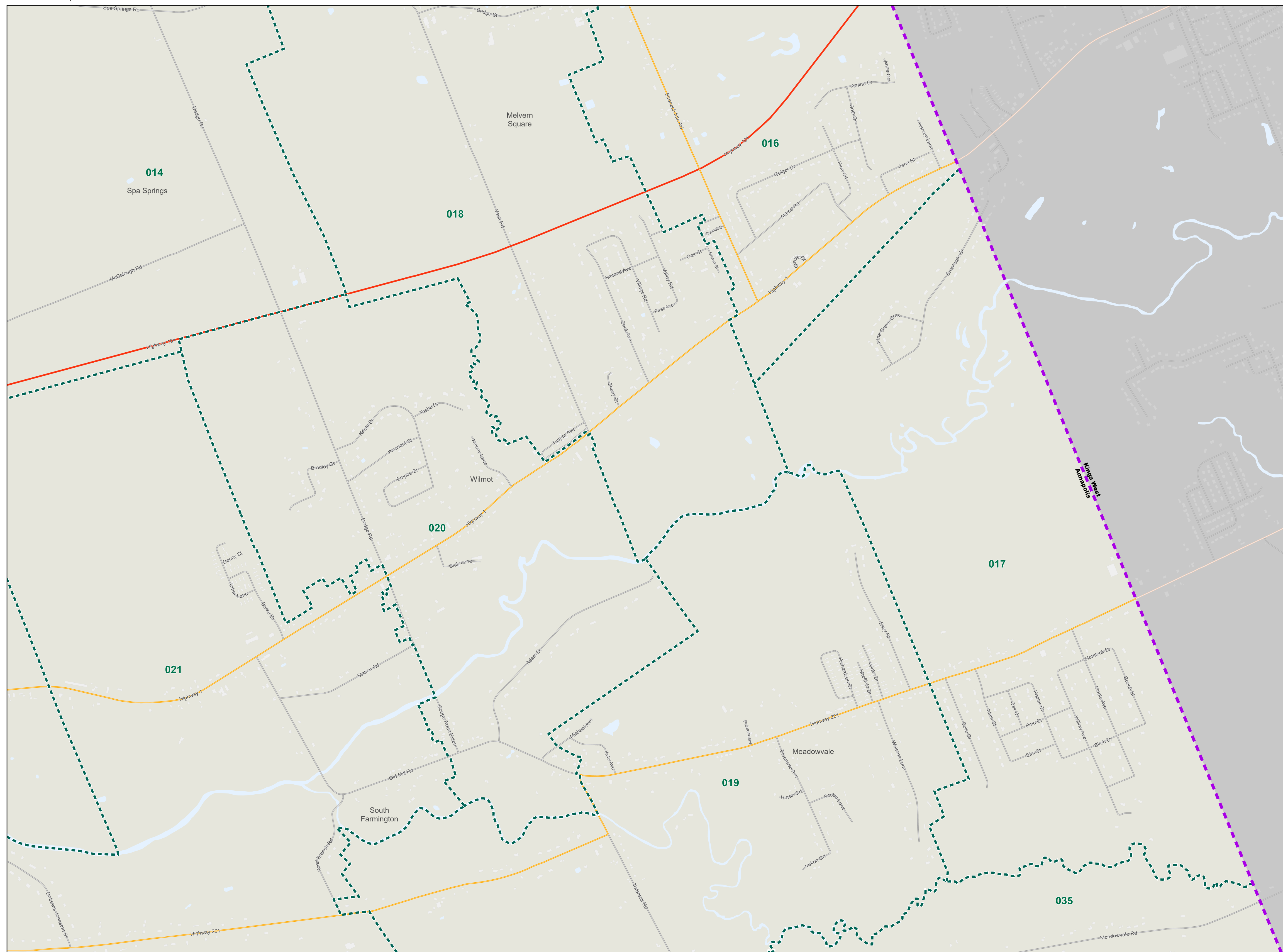
Bridgetown Inset - 14,060



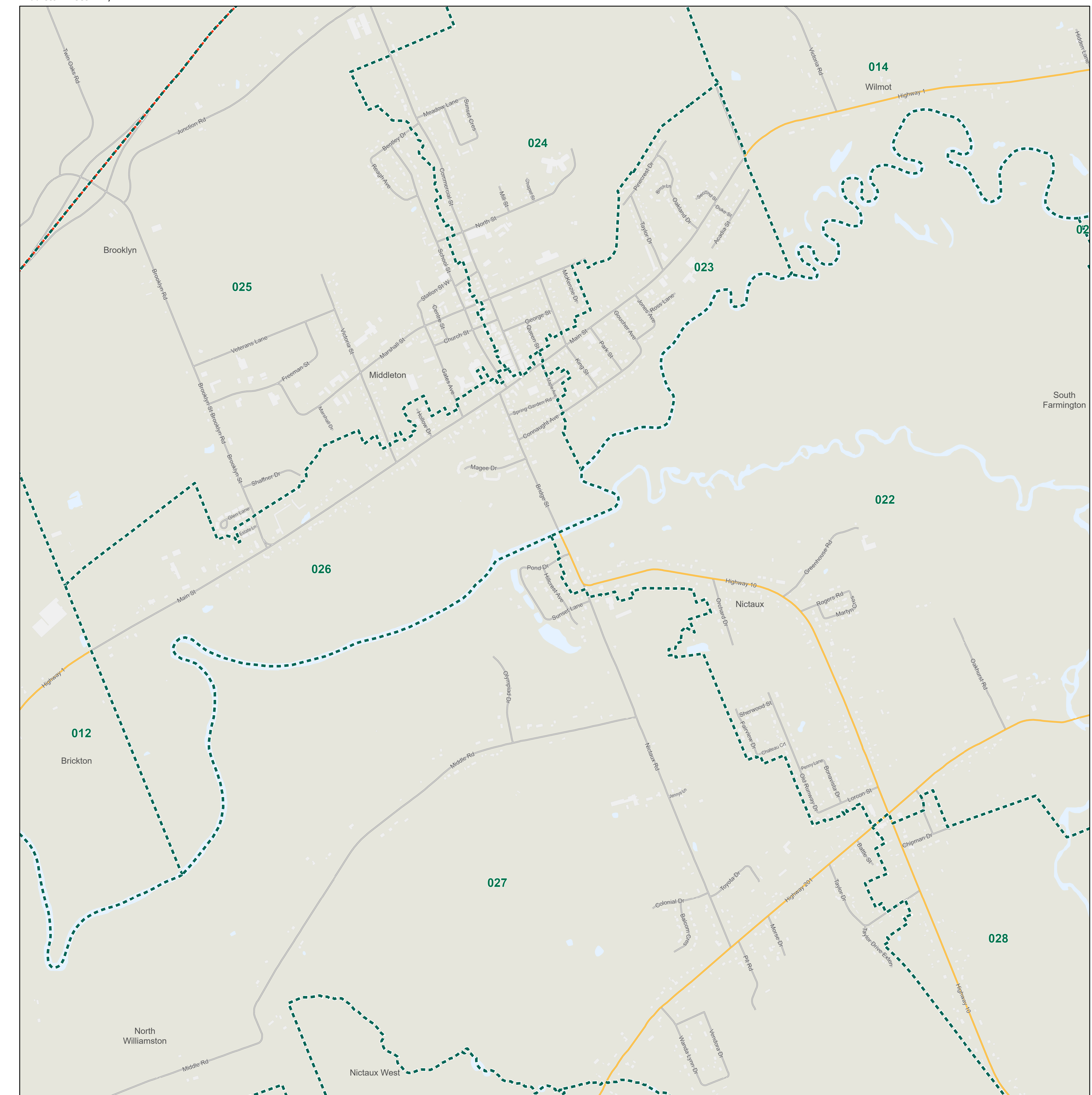
Annapolis Royal Inset - 11,660



Wilmot Inset - 9,790



Middleton Inset - 10,050



- Legend**
- - - - - 2019 Electoral District Boundary
 - - - - - Polling Division Boundary
 - Electoral District
 - ▲ Residential Centre Polling Division
 - 001 Polling Division Number
 - Highway - 100 Series / Trans Canada
 - Secondary Highway
 - Road
 - - - - - Railroad
 - Airport
 - Lake / Ocean
 - Building Footprint

Provincial Electoral Map Series - 2026

The electoral district names and boundaries are based on amendments to the House of Assembly Act as passed through Bill No 203, House of Assembly Act (amended), Chapter 32 of the Acts of 2026. An Act to Amend Chapter 1 (1992 Supplement) of the Revised Statutes, 1989, the House of Assembly Act. NAD83 (CSRS) UTM Zone 20N
Base Mapping Source: Service Nova Scotia, Department of Natural Resources
Produced by: Elections Nova Scotia
Version Date: January 1, 2021

